

# LOCKMETAL

## STATEMENT CLADDING



**WILLMOTT DIXON**

**CLIENT:**

**Willmott Dixon  
Partnership Homes**

**LOCATION:**

**Cotton End Forest Primary School,  
Bedford**

**PROJECT OVERVIEW:**

**New school development**

**SOLUTION:**

**Statement cladding**

**PACKAGE SIZE:**

**£360,000**

The Lockmetal team have recently completed a statement cladding project on the Cotton End Primary School in Bedford. The project run by Willmott Dixon has created 630 new school places within a unique setting, embedded in the edge of a community forest.

The £360,000 cladding project was part of the overall £9.7 Million project, on which Lockmetal designed, supplied and installed:

- Thermowood secret fix timber cladding system
- Lockmetal shingle cladding system
- Lockmetal polyester powder coated pressed aluminium cill system
- Marley Equitone Pictura cladding system

To achieve this Lockmetal firstly undertook a review of all package information, which formed the basis of their submission.

Further meetings followed which included key technical and contracts staff from Lockmetal

Statement cladding design  
and installation specialists

**COMS**

 **Constructionline**  
Part of Capgemini

 **smas**  
worksate  
contractor  
www.smasltd.com

as recognised by  
**SSIP**  
SAFETY  
SCHEMES IN  
PROCUREMENT

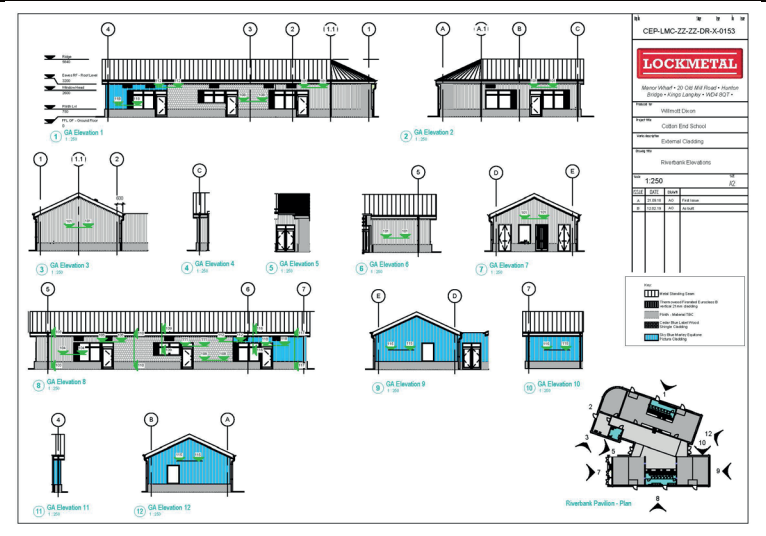


to ensure our offering met Willmott Dixon and their client's requirements in respect of quality, specification, accreditation, program and price.

Our project delivery team understand that tackling design issues early in a project make a successful outcome more likely.

Crucially Lockmetal was able to demonstrate a good track record both with Willmott Dixon and other similar organisations fulfilling this type of contract.

During the material production and installation phases, engagement with Willmott Dixon management staff and co-ordination with the other sub-contractors became key, ensuring the project came to completion on time and in budget. Willmott Dixon and their Client are pleased with the outcome and the building looks outstanding!



**OUR EXPERIENCED AND KNOWLEDGEABLE TEAM ENSURE WE RUN-TO-TIME!**



PROPOSAL



FRONT LOAD THE DESIGN

ORDER



UNDERSTAND THE COMPLEXITIES

DESIGN



FOCUS ON THE INTERSECTIONS

APPROVAL



COLLABORATE WITH OTHER PACKAGES

MANUFACTURE



MANAGE THE DETAIL

INSTALL



TALK TO THE PEOPLE

SIGN OFF



**LOCKMETAL**

STATEMENT CLADDING®

01923 936400  
sales@lockmetal.com

**lockmetal.com**  
J275-LM-CS-WD-240519  
© Lockmetal Ltd